

TOUCHSCREEN LCD MONITOR

User Manual



Table of contents

Safety Information-----	2- 3
Care and Cleaning-----	4
Contents-----	4
Installation-----	4
Connecting the Monitor-----	5
Basic OSD Setup-----	5~ 8
USB Touch Driver User Guide For Windows XP-----	9~16

Important Safety Information

Read and understand all safety information before using this product. Follow all instructions marked on the product and described in this document. Pay close attention to the following installation warnings and safety precautions.

Intended Use

This monitor was designed for BUS to replace an existing monitor. These monitors are intended for indoor use only and are not designed for use in BUS locations.

Explanation of Signal Word Consequences

DANGER: To avoid the risk of fire and/or explosion which will result in serious injury or death: Do not install or use this product in a hazardous location.

WARNING: To avoid the risk of fire which could result in serious injury or death: Do not remove the cover or back of the monitor.

CAUTION: To avoid the risk of electric shock which could result in serious injury or death:

- This device must be operated with the original power supply,
- Do not use a damaged power supply.
- Do not use a power cord that is frayed or otherwise damaged.

CAUTION: To avoid the risk of electric shock which may result in minor or moderate injury:

- The socket-outlet should be installed near the equipment and should be easily accessible.
- Use a power cable that is properly grounded. Always use the appropriate AC cord certified for the individual country. Some examples are listed below:
- Do not service the monitor. Do not remove the cover or back of the monitor. There are no user serviceable parts inside. Refer all servicing to qualified service personnel. The backlight inverter output is at high voltage.
- Do not use non-conforming replacement parts.
- Do not expose the monitor to rain or other sources of water, steam, or moisture.
- Do not place foreign objects on the monitor or its cables.

CAUTION: To avoid the risk of minor or moderate personal injury or damage to the monitor:

- Never wall-mount the monitor without the locking mechanism in place.
- Use an anchoring system appropriate for the weight of the product.

- Consult a construction professional before attempting to hang the unit on the wall.

To avoid the risk of glass breakage which may result in minor or moderate injury:

- Handle the monitor with care to avoid breaking the touch screen sensor. The display contains glass parts. Dropping the display may cause the glass parts to break.
- Do not place foreign objects on the monitor.

Important Notes:

- Plug power cord into appropriate power source & a grounded receptacle.
- When unplugging power supply cord, pull on plug not cord.
- Do not connect or disconnect this product during an electrical storm.
- Install the display in a well-ventilated area. Always maintain adequate ventilation to protect the display from overheating and to ensure reliable and continued operation.
- Do not expose this display to heat. Passive heat may cause damage to the case and other parts.
- Do not install this display in areas where extreme vibrations may be generated. For example, nearby manufacturing equipment may produce strong vibrations. The vibrations may cause the display to exhibit picture discoloration or poor video quality.
- Product weight varies from 10 to 24 pounds depending on the packaging, use caution when lifting.
- Ensure that metal does not contact the touch screen.

To avoid ergonomic concerns:

Do not install the monitor in a manner or location with awkward accessibility. Extended use may result in muscle, tendon, or fixed posture strains. It is recommended you take periodic breaks from continuous use.

CAUTION: To avoid the risk of electric shock which may result in minor or moderate injury:

Liquid is spilled into the product or the product is exposed to rain or water. The product does not operate properly when operating instructions are followed.

- The product has been dropped or the case has been damaged.
- The product shows a distinct change in performance, indicating a need for service.

Care and Cleaning

CAUTION: Turn off your MONITOR before cleaning.

You can clean the MONITOR as required, using a soft lint-free cloth. Be sure to occasionally dust the ventilation slots in the cabinet to help assure adequate ventilation.

The MONITOR's screen may be cleaned with a soft, lint-free cloth as well. Take care not to scratch or mar the screen. If necessary, you may use a cloth dampened with warm water. While cleaning do not spray liquid directly on the screen, or allow liquid to run down the screen and inside the Monitor. Also, never place drinks or vases with water on top of the monitor. This could increase the risk of fire or shock hazard or damage to the monitor.

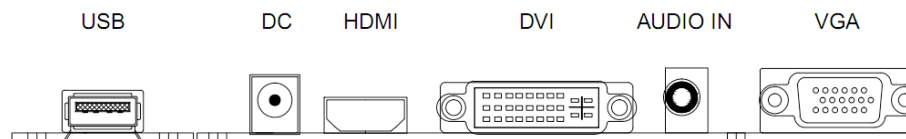
Contents

Please check the following listed accessories before installation:

Monitor	X1
User manual	X1
Power Supply	X1
VGA Cable	X1

Installation

Rear interface



- (1) DC12V: Mains power input
- (2) VGA: Plug the D-type15 pin VGA interface into the VGA video Interface of the Application, and the other end into the LCD monitor's VGA connector. Fasten the screw.
- (3) HDMI/DVI : Lets you connect a device, such as a digital cable box, with an HDMI or a DVI output. HDMI(High Definition Multimedia Interface)

Provides an uncompressed digital connection that carries both video and audio data by way of an integrated mini-plug cable. Since HDMI technology is based on Digital Visual Interface (DVI), the jack on the back of your MONITOR is also compatible with DVI devices. HDMI Input Lets you connect a device, such as a digital cable box, with an HDMI output.

- (4) USB:Used to connect the computer's USB port,WIN7 / 8 system is free to install the driver,plug and play.Can support up to 10-point touch. WINXP/LINUX/Android OS After the need to install the corresponding driver before you can use the touch device.
- (5) Audio In:Use to obtain sound when a PC is connected to the VGA/DVI jack. Use a 3.5 mm stereo mini pin cable (sometimes referred to as 1/8” stereo mini pin) to connect a PC to your MONITOR.

Connecting the Monitor

When choosing your work-space, select a sturdy, level surface. Also, make sure you can easily access the back of the monitor. Easy access helps ensure a smooth setup of the monitor.
 Note: Before setting up your monitor, refer to the Important Safety Information section at the beginning of this document.

- 1.Turn off your device.You should always turn off the device Before connecting or disconnecting any device.
2. Connect one end of the VGA cable to the VGA connector on the monitor.
 Connect the other end to your application's VGA connector
3. Plug the monitor's DC into the power supply.

Basic OSD setup

- (a).press MENU button to access Main MENU interface
- (b).press + or – to select the desired sub-menu interface and press MENU again to view the sub-menu (total of 5 sub-menus)
- (c). press + or – to select the desired feature & press MENU again to view the corresponding setting
- (d) press + or – to adjust the parameter value of the setting
- (e) press SOURCE to exit the setting and return to the previous interface

<div> <div>Main Menu</div> <div> <div>Color</div> <div>Image Setting</div> <div>OSD Menu</div> <div>Signal Source</div> <div>Audio</div> <div>Exit</div> </div> </div>	<div> <div>1.Press the MENU button to view the main Menu interface.</div> <div>2.press +(up) or – (down) to select the desired sub-menu interface and press MENU button to view the selected sub-menu.</div> <div>3. To exit from the Main menu interface,either press the SELECT button or press +(up) or – (down) to select Exit, then press the MENU button</div> </div>
<div> <div>Color</div> <div> <div>Contrast</div> <div>Brightness</div> <div>Color Adjust</div> <div>Color Temp</div> <div>Sharpness</div> </div> </div>	<div> <div>1.From the color setting sub-menu interface, press +(up) or – (down) to select the desired feature and press MENU button to view the selected feature.</div> <div>2. press +(up) or – (down) to adjust the settings of the selected feature.</div> <div>3.CONTRAST、 BRIGHTNESS Selecting the Contrast option increases (+) or decreases (-) the strength (lightness or dimness) of the image. Adjust the contrast using the -/left arrow and +/right arrow buttons, and press MENU to confirm the new setting.</div> <div>4.Contrast and brightness: 0-100. Color adjust : Red. Green. Blue Color temp: 9300. 6500. 5800. S-RGB. USER</div> <div>5.Press the “Source” button to exit</div> </div>

<p style="text-align: center;">Image Setting</p> <div style="border: 1px solid black; padding: 10px; margin: 10px auto; width: 150px;"> <p>Clock</p> <p>Phase</p> <p>H. Position</p> <p>V. Position</p> <p>Auto Adjust</p> </div>	<p>Enter “Image Setting” setup interface in the main menu. This menu is only available in VGA mode.</p> <p>1.CLOCK: If the clock setting of your image is not fine-tuned, you may observe periodic vertical bars of video noise on your image. These bars of noise are usually adjusted out when an Auto Configuration is performed. If the bars of noise are still present, this setting can be adjust manually. Adjust this setting so that either the vertical bars of noise are replaced by an even amount of noise across the whole screen, or the noise disappears completely. If you do an Auto setting, the monitor will try to find the best Clock/Phase setting. If you are not satisfied with the auto adjustment, fine-tune the clock manually as described above.</p> <p>2. clock adjust from 0 to100 phase :0-63.</p> <p>3. H position:Moves image horizontally on screen either left (－) or right (+).</p> <p>4. V position : Moves images vertically on screen left (－) or right (+).</p> <p>5.Auto adjust:automatically adjust image clock ,phase,H-position V-position settings</p> <p>6. Press the “Source” button to exit</p>
---	---

<p style="text-align: center;">OSD menu</p> <div style="border: 1px solid black; padding: 10px; margin: 10px auto; width: 150px;"> <p>OSD H. Pos.</p> <p>OSD V. Pos.</p> <p>OSD Timer</p> <p>Language</p> <p>Reset</p> </div>	<p>Enter “OSD Menu” setup interface in the main menu.</p> <p>1. Adjust the OSD image horizontally or vertically by pressing the +(>)or－(<)button. H-position moves the OSD position left or right. V-position moves the OSD position up or down.</p> <p>2.OSD H/V pos : 0-200 OSD timer:3-30</p> <p>3. Language,Select a language</p> <p>4.Reset,Resets the control functions back to the original factory preset values. In order for the Recall function to work, the timing must fall under one of the factory preset timing modes.position.</p> <p>5.Press the “Source” button to exit</p>
<p style="text-align: center;">Audio</p> <div style="border: 1px solid black; padding: 10px; margin: 10px auto; width: 150px;"> <p>Volume</p> <p>Mute</p> </div>	<p>Enter “Audio” setup interface in the main menu.</p> <p>1.Volume:pressing the +(>)or－(<)button. Volume:0-100.</p> <p>2.Mute: ON/OFF</p> <p>3.Press the “Source” button to exit</p>

USB Touch Driver User Guide For Windows XP

First, the environmental requirements

Windows XP of x86 / x64.

Second, the driver installation procedure

1. extend tablecloth pattern

A. To perform a multi-mouse to multi-monitor function (hereinafter referred to as MM function), first

Display mode is set to extend the tablecloth.

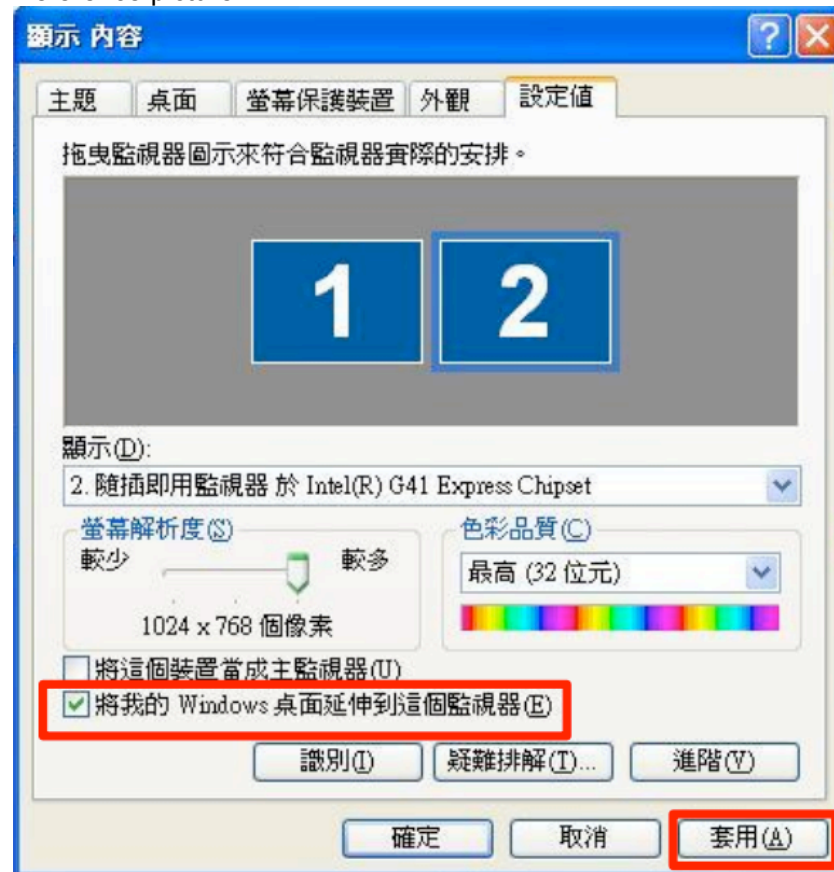
Path: My Computer -> Control Panel -> Display -> setpoint

Reference picture:

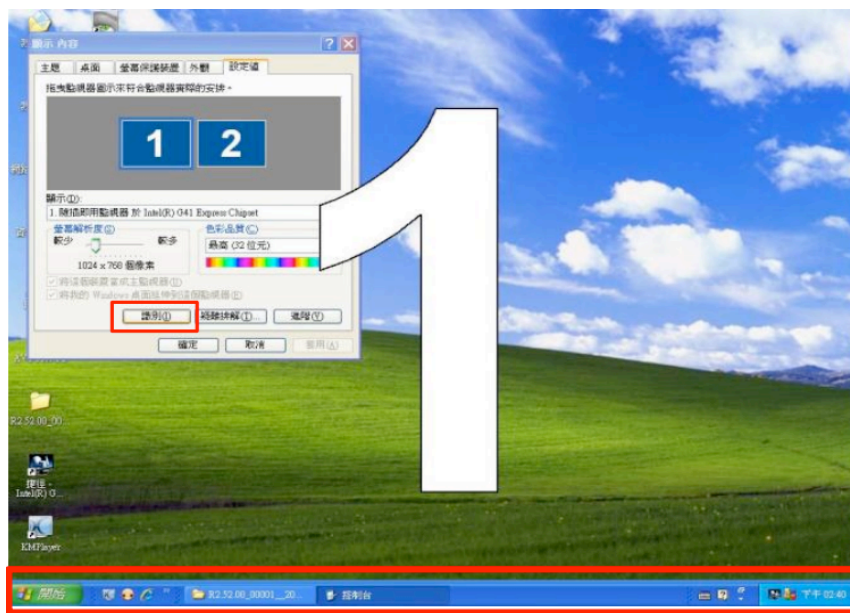


B. Click on the 2nd monitor, check my Windows desktop extends to the monitor, press the [set Use].

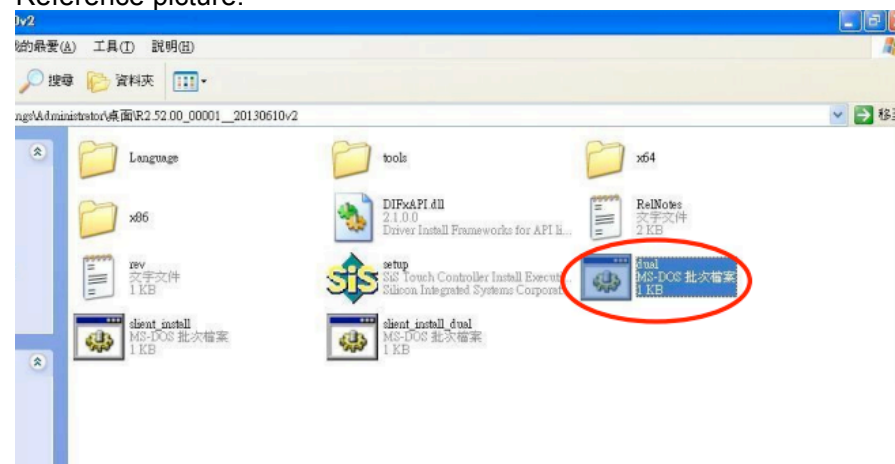
Reference picture:



C. extend tablecloths, press [recognition] to display the main display 1 confirmation, please ensure that the work faithfully in The main display, and later before the pairing of the monitor and the Touch Panel. Reference Photos



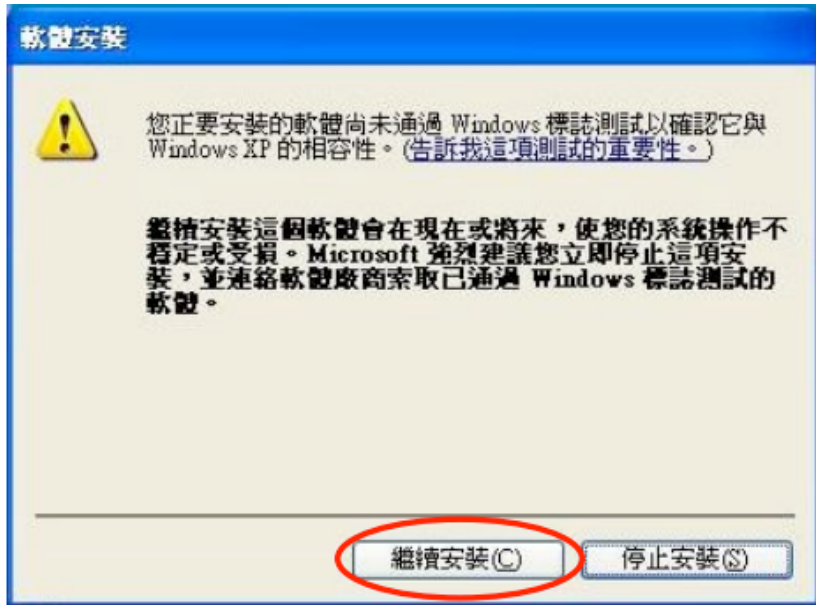
2. Run the driver package in the installation program
 - To install the ordinary driver, click setup.exe.
 - To MM feature installed driver, click dual.bat, that will be when installing driver.
- Loaded multi-mouse-daemon.exe this application.
Reference picture:



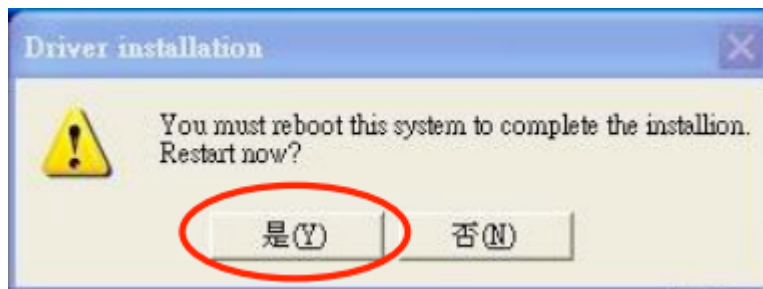
- After the installation program interface appears, if already too old driver before installing, press [is] removed.
- Reference picture:



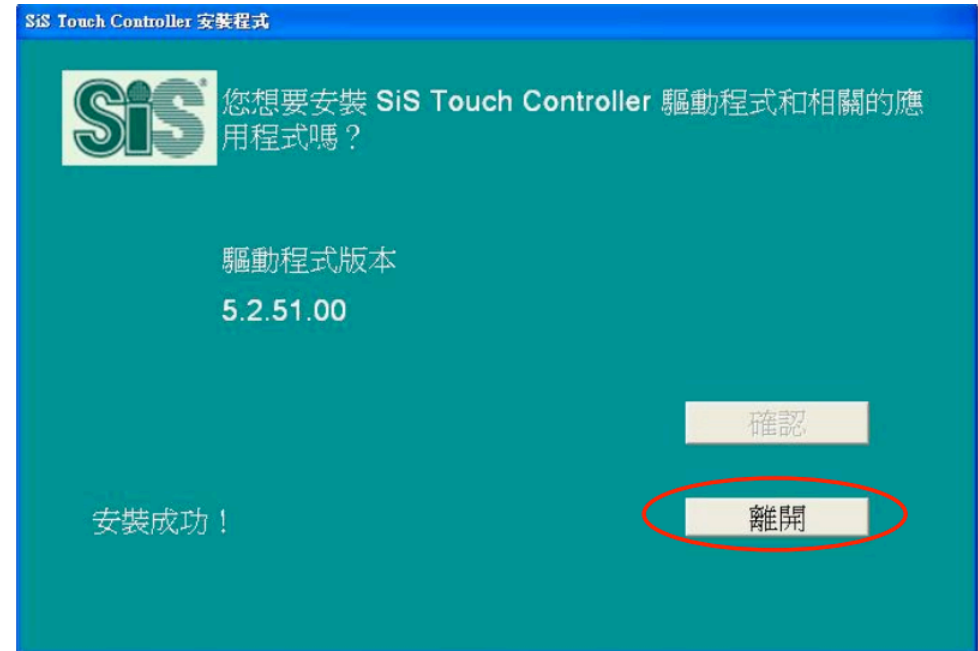
D. Press [OK] to install driver, will appear in the Windows XP software to install warning, continued
Press [Continue installation], until the installation date.
Reference picture:



E. installation process will ask whether to re-boot, press [Yes].
Reference picture:



F. After successfully installing the driver, press [left], after they reboot.
Reference picture:



G. After rebooting, you can see a small multi-mouse-daemon.exe applications in the taskbar
Icon indicates MM function successfully installed driver, and the default for all Touch
Panel are matched to the main display.
Reference picture:



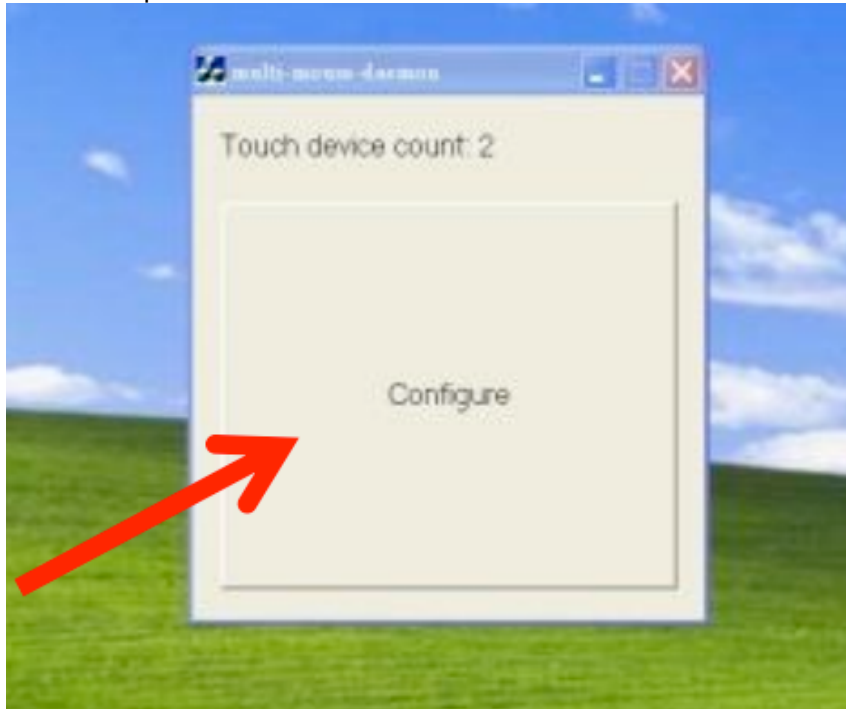
3. Perform multi-mouse-daemon.exe pairing

A. Click on the work column multi-mouse-daemon.exe, the main display will appear display

[Configure] dialog box, this time can be either a Touch Panel to tap [Configure] dialogue

Block, start pairing.

Reference picture:



B. After the main display will appear [Please TOUCH here] dialog box, then please Touch To pair

To the main display of Touch Panel, Touch Panel that set this paired with the main display.

Reference picture:



C. who received a second monitor will appear [Please TOUCH here] dialog box, then please Touch To Pairing to this display Touch Panel, Touch Panel that set this paired with this monitor.

D. After all displays are paired, that pairing is completed, after they use the Touch Panel in accordance with the pairing Control corresponding display.

END